

Thailand
Phuket



Resort Highlights

- Discovering new spaces inspired by the magic of contrasts
- Enjoying powerful sensations on the putting green or flying trapeze, or scuba diving
- Seeing your children explore nature with our G.O@s from 4 months old
- Enjoying the world of wellness at BLISS NOW Spa
- Visiting the Phi Phi Islands and the Bay of Phang Nga



Summary

| | |
|--------------------------------|-----------|
| Accommodation | 4 |
| Sports & Activities | 12 |
| Swimming Pools | 16 |
| Club Med Spa by Payot* | 18 |
| Excursions* | 19 |
| Childrens' Services | 20 |
| Restaurants & Bars | 24 |
| Practical Information | 26 |



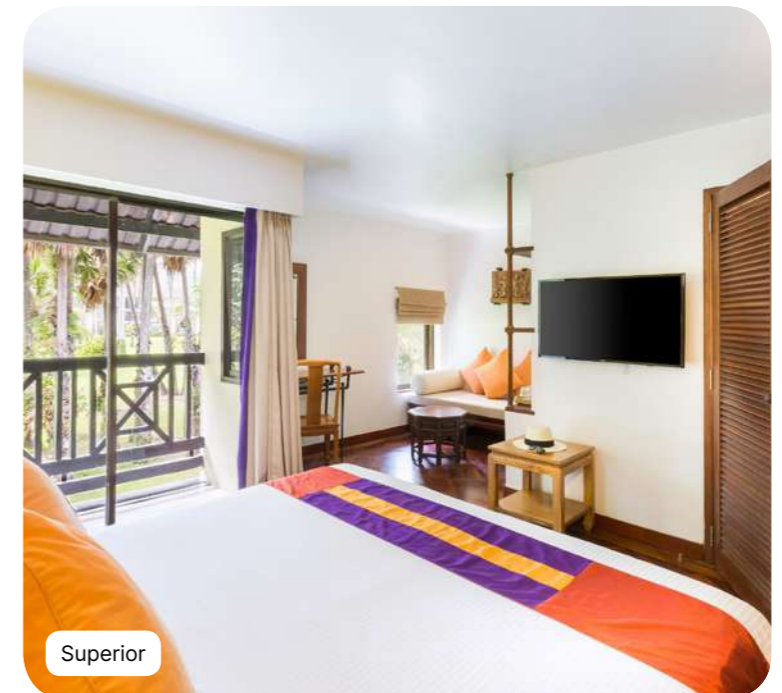
Accommodation



Suite

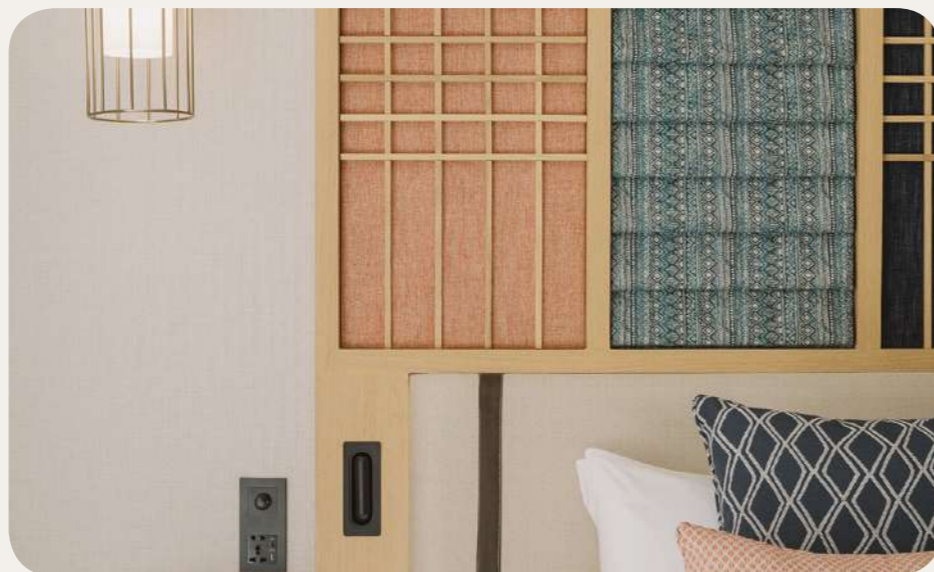


Deluxe



Superior

Superior



| Name | Min. m ² | Highlights | Capacity |
|---|---------------------|------------------------------|----------|
| Interconnecting Superior Room - Terrace or Balcony, Renovated | 52 | Furnished balcony or terrace | 4 - 6 |
| Superior Room - Terrace or Balcony, Renovated | 26 | Furnished balcony or terrace | 1 - 3 |
| Interconnecting Superior Rooms, Renovated | 52 | | 4 - 6 |
| Superior Room, Renovated | 26 | | 1 - 3 |
| Superior Plus Room, Renovated | 28 | | 1 - 2 |
| Superior Room - Terrace or Balcony | 30 | Furnished balcony or terrace | 1 - 3 |
| Interconnecting Superior Room - Terrace or Balcony | 60 | Furnished balcony or terrace | 4 - 6 |
| Superior Room | 26 | Balcony | 1 - 3 |
| Superior Plus Room | 28 | | 1 - 2 |
| Interconnecting Superior Rooms | 52 | Balcony | 4 - 6 |
| Superior Room - Mobility Accessible | 30 | | 1 - 2 |

Equipment

- Air conditioning
- Baby bed (Must be pre-booked)
- Club Med Baby Welcome
- Telephone
- Wi-Fi Access
- TV Screen
- Sofa
- Mini fridge at your disposal
- Kettle - Coffee/tea making facilities
- Safe deposit box
- Electricity: 200-240 V
- Electricity : 100-127 V

Bathroom

- Shower
- Separate toilets
- Hair Dryer
- Amenities (shampoo, shower gel, body lotion)
- Slippers

Services

- Luggage service
- Laundry service (extra charge)
- Cleaning on demand

Deluxe



| Name | Min. m ² | Highlights | Capacity |
|--|---------------------|--------------------|----------|
| Deluxe Room - Terrace or Balcony | 43 | Balcony or terrace | 1 - 3 |
| Deluxe Room, Terrace or Balcony, Renovated | 43 | Balcony or terrace | 1 - 3 |

Equipment

- Air conditioning
- Baby bed (Must be pre-booked)
- Club Med Baby Welcome
- Telephone
- Wi-Fi Access
- TV Screen
- Sofa
- Kettle - Coffee/tea making facilities
- Iron and ironing board in the room
- Umbrella
- Safe deposit box
- Electricity: 200-240 V
- Electricity : 100-127 V

Bathroom

- Shower
- Separate toilets
- Hair Dryer
- Magnifying mirror
- Amenities (shampoo, shower gel, body lotion)
- Bathrobe
- Slippers

Services

- Luggage service
- Minibar (non-alcoholic drinks) - refilled weekly
- Turn down service
- Beach towel
- Laundry service (extra charge)
- Cleaning on demand

Suite



| Name | Min. m ² | Highlights | Capacity |
|---|---------------------|--|----------|
| Suite - Balcony | 74 | Separate Living Room, Furnished balcony | 1 - 2 |
| Suite - Balcony Interconnecting with Superior Room - Terrace or Balcony | 104 | Children's Separate Room, Separate Living Room, Furnished balcony or terrace | 4 - 5 |
| Suite - Balcony, Renovated | 74 | Furnished balcony | 1 - 3 |
| Suite - Balcony, Interconnecting with Superior Room - Terrace or Balcony, Renovated | 104 | Furnished balcony or terrace | 4 - 5 |

Sports & Activities



Water Sports

| | Group Lessons | Free Access | At extra cost course | Min. age (years) | Dates of Availability |
|---------------|--|-------------|----------------------|------------------|-----------------------|
| Scuba diving* | Intermediate/ advanced / Beginners | | ✓ | 10 years old | Always |

*on demand
**Depending on weather conditions



Land Sports & Leisure

| | Group Lessons | Free Access | At extra cost course | Min. age (years) | Dates of Availability |
|-------------------|--|-------------|----------------------|------------------|-----------------------|
| Fitness | Group lessons for all levels / Free access | | | 16 years old | Always |
| Golf | Initiation | | | 8 years old | Always |
| Climbing | | ✓ | | 6 years old | Always |
| Thai Boxing | All levels | | | 8 years old | Always |
| Archery | Initiation | | | 6 years old | Always |
| Padel | | ✓ | | 6 years old | Always |
| Tennis | All levels | | | 4 years old | Always |
| Trapeze & Circus | Initiation / Group lessons for all levels | | | 4 years old | Always |
| Snorkelling | Free access | | | | Always |
| Team sports | Free access | | | 8 years old | Always |
| Entertainment | | ✓ | | | Always |
| Swimming Pools | Free access | | | 16 years old | Always |
| Cookery lessons | Initiation | | | | Always |
| Petanque (boules) | Free access | | | | Always |
| Squash | Free access | | | | Always |
| Table tennis | Free access | | | | Always |
| Excursion* | | ✓ | ✓ | | Always |

*on demand
**Depending on weather conditions
*** Pre-bookable green fee packages at extra cost

Swimming Pools



Main swimming pool Outdoor Pool

This freshwater swimming pool has three swimming areas with different depths and is equipped with teak deckchairs, parasols and showers.

Children are under the supervision of their parents or an accompanying adult.

Zen Pool Outdoor Pool



The pool, reserved for adults over 18 years old, is located at the eastern edge of the Resort, with a spectacular view over the Bay of Karon. No lifeguard on duty.

Children Swimming pool Outdoor Pool



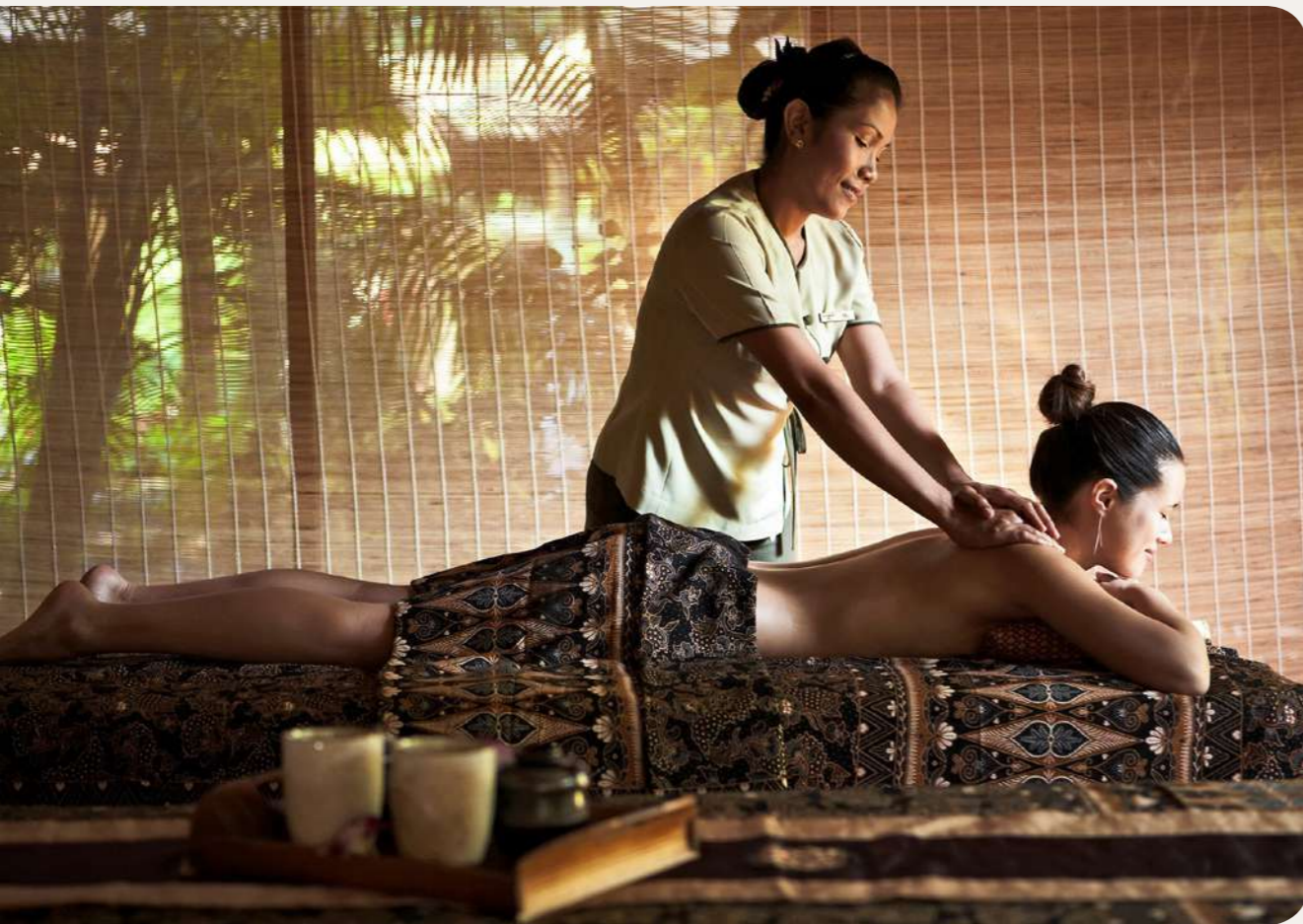
Children can have fun in the two outdoor pools of the Kids Club. A pool at the Mini Club Med, and a shallow pool for the Petit and Baby Club Med.

Depth (min/max): 0.3m / 0.9m

Club Med Spa by Payot*

PAYOT
PARIS

For nearly 100 years, French excellence has been offering all women the chance to reveal their true beauty. Using manual gestures inspired by dance, the creator Nadia Payot has placed innovative formulas and great sensoriality at the heart of the choreography of the '42 movements'. A cosmetic revolution based on minerals, that's all about letting go.



*on demand

Excursions*



Nature getaways :

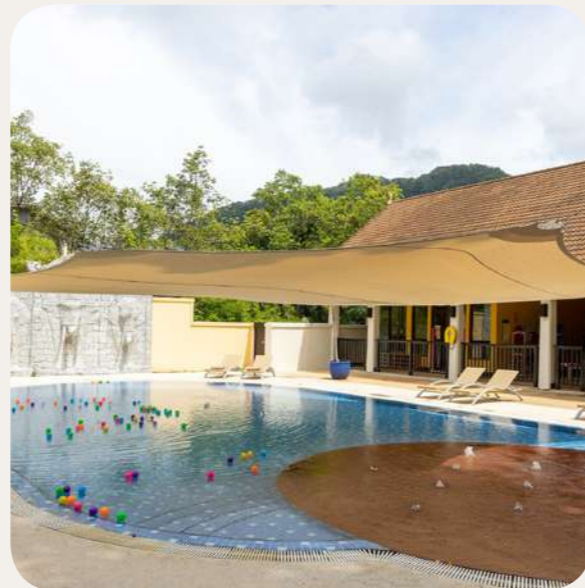
Back to the Nature / Coral and Maiton / Elephant Care Adventure

Connecting with culture :

Introduction of Buddhism

*on demand

Childrens' Services



Childrens' Clubs

| Age Range | Name | Included Activities | On demand activities | Dates of Availability |
|----------------|-----------------|--|-------------------------------|-----------------------|
| 0 to 2 years | Baby Club Med®* | Creative workshops, Baby Gym, Early learning, Walks | Family yoga at Baby Club Med® | Always |
| 2 to 3 years | Petit Club Med* | Evening, Show time, Creative workshops, Baby Gym, Early learning, Walks | | Always |
| 4 to 10 years | Mini Club Med + | Fun activities, Archery group classes, Flying trapeze group lessons, Golf group lessons, Tennis group Lessons, Thai boxing group Lessons, Evening, Show time, Trampoline, Petit Chef Program | | Always |
| 11 to 17 years | | New activities, Archery group classes, Flying trapeze group lessons, Golf group lessons, Tennis group lessons, Thai boxing group Lessons, Show time, Trampoline | | Always |
| | | New activities, Archery group classes, Flying trapeze group lessons, Golf group lessons, Tennis group lessons, Thai boxing group Lessons, Show time, Trampoline | | Always |

Childrens' Activities

| Age Range | Included Activities | On demand activities |
|----------------|--|----------------------|
| 0 to 2 years | Pool free Access, Family "Big Snack" | |
| 2 to 3 years | Club Med Amazing Family!, Pool free Access, Family show time, Family "Big Snack" | |
| 4 to 10 years | Club Med Amazing Family!, Pool free Access, Free acces to golf Resort's facilities, Family show time, Family Arts & Crafts, Family "Big Snack", Family tournaments & games, Free access to tennis courts | |
| 11 to 17 years | Club Med Amazing Family!, Pool free Access, Free acces to golf Resort's facilities, Family Arts & Crafts, Family "Big Snack", Family tournaments & games, Free access to tennis courts | Family Spa |

*on demand



Childrens' Services

| Age Range | Included activities & facilities | On demand activites & facilities |
|---------------|--|----------------------------------|
| 0 to 2 years | Club Med Baby Welcome, Facilitate your arrival | Pyjamas Club |
| 2 to 3 years | Facilitate your arrival | Pyjamas Club |
| 4 to 10 years | Facilitate your arrival | Pyjamas Club |

*on demand

Restaurants & Bars



Bars

The Sanook

Main bar

Zen Pool Bar

Pool bar

Wine cellar

Wine Bar

Restaurants



The Mamuang Main Restaurant

Dine to your delight at the Mamuang, and explore its newly redesigned larger buffet spaces and air-conditioned dining areas, or enjoy traditional specialty dishes for a taste of Thailand. For added convenience, a Baby Corner offers you a place to prepare special meals and a variety of amenities to make dining with your young one relaxing. Please note: High chairs and booster cushions are available upon request. Late Breakfast is available.

The Chu-da Specialty Restaurant

Dine and delight where Thai tradition meets modern elegance at The Chu-da Specialty Restaurant. Enjoy an intimate dining experience and savour our "À la carte" menu of fusion flavours paired with a glass of wine. Please note: Operation days and hours may vary, check in resort for more information. High chairs and booster cushions are available upon request.



Practical Information



- | | | | | | | |
|-------------------------|----------------------------------|---------------------------------------|--------------------------|---------------------------------|-----------------------------------|------------|
| Front desk Réception | La boutique | Discovery Center Espace Découverte | Club Med Spa | Flying Trapeze Trapèze | Squash | Snorkeling |
| Rooms Chambres | Meeting Room Salle de réunion | Cooking class corner | Thai Boxing Boxe Thai | Archery Tir à l'arc | Basketball | |
| Restaurant | Baby corner Biberonnene | Theatre Théâtre | Bocceball Pétanque | Volleyball | Soccer Football | |
| Bar | Amazing Family Corner | Pool Piscine | Fitness | Tennis | Golf | |
| Nursery Infirmerie | Kid's Club | Zen pool Piscine zen | Cardio Training | Table tennis Tennis de table | Scuba diving Plongée Bouteille | |

Address

CLUB MED PHUKET - HOLIDAY VILLAGES
3 KATA ROAD, KARON S-D, A. MUANG DISTRICT, Island of Phuket
83100, Thailand

No minimum age

Hygiene & Safety

Safe Together. Club Med has implemented new hygiene and safety measures to offer you peace of mind and a most joyful experience.

Easy arrival

Easy Arrival service*
Register & manage your details online, we will have everything ready for your arrival :
Easy Check in – check out
Children's club enrolment
Club Med online Account
Available on your Member Space
*Selection of services according to Resorts

CHECK-IN/CHECK-OUT

Times of arrival/departure from the Resort
For GM arrival with stay package / stay package inclusive transfer only (flight not booked with Club Med):
For all stays, arrival between 3pm and 8pm. G.M@s who arrive early may be able to have lunch at extra cost, subject to availability.
Availability of rooms: between 3pm and 8pm.
Rooms to be vacated by 10 am on day of departure, for departure from the Resort by 3 pm (breakfast and lunch included).
Should any of these times change, the revised times will be given in your "Holiday Rendez-Vous".
For GM arrival with flights booked with Club Med:
- Room to be allocated as soon as possible according to availability
- Food & Beverage service access to resort facilities and F&B services are included from arrival until departure time

TRANSFERS

Phuket airport (90 mins.)

My Club Med App

My Club Med App : All you need is My Club Med App - your ideal travel companion to prepare and organize your stay. Discover the Resort map, facilities and activities, and enjoy dedicated services to make the most of your stay.
Download My Club Med App on the App Store or Google Play.